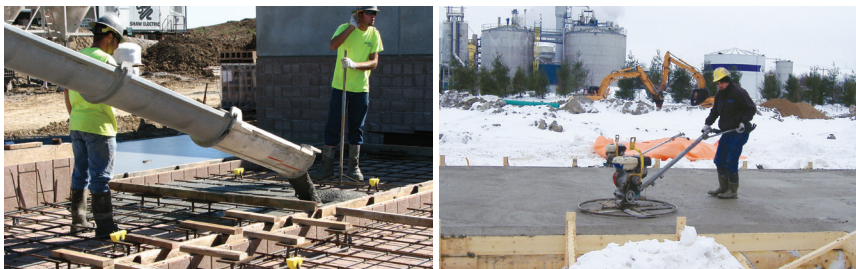


WeatherMix®

Designed to tolerate temperatures outside the ideal range for concrete placement. Helps contractors better predict labor costs.

FEATURES:

- WeatherMix® is specially designed to tolerate temperatures outside the ideal range (50° -80° F) for traditional concrete placement.
- Ideal for providing residential, commercial, industrial design professionals, contractors and owners with a solution for concreting in hot or cold seasons.
- Permits placement of concrete in temperatures as low as 19° F and as high as 105° F.
- Guarantee 4 hour (+/- 1 hour) initial set time provided ACI 306: *Guide to Cold Weather Concreting* or ACI 305: *Specification for Hot Weather Concreting* practices are followed.
- Reduces or eliminates heating and protection time in cold weather and reduces the evaporation rate and moisture loss in the summer.
- Extends construction time further into the winter and summer months where the temperatures may not be ideal for concrete placement.
- Controlled and predictable setting time leads to faster slab finishing and lower and predictable labor costs for contractors.
- Superior workability with reduced segregation and bleeding.
- Superior finishing characteristics for flatwork and cast surfaces.
- Cold weather mixes provide accelerated setting to protect against freezing and minimize the occurrence of frozen edges and corners.
- Hot weather mixes provide retarded setting to slow the cement hydration process to protect against moisture loss and evaporation and to help minimize the occurrence of thermal cracking.



WeatherMix®

is part of the

MasterMix Series™

The MasterMix Series is an innovative line of concrete solutions designed to increase efficiency and reduce risk on construction projects. Achieve higher performance and master your craft with the MasterMix Series. Talk to your sales representative to learn more.

Agileflow™

Places quickly and flows easily through congested and heavily-reinforced areas. Eliminates the need for vibration and increases production time.

RAPIDFORCE»™

Achieves high strength rapidly, without affecting normal placement procedures as design slump is maintained.

Hydromedia®

Reduces risk of flash flooding and stormwater runoff. Where pervious concrete is the appropriate choice, Hydromedia flows better than other pervious concretes.

Thermaflow™

Optimizes the design of duct-bank systems for predictable thermal performance and potential project cost savings.

www.MaterialsThatPerform.com

BENEFITS:

- WeatherMix® does not contain calcium chloride or any other intentionally added chloride-containing ingredients. This makes an excellent choice for any concrete that comes into contact with steel surfaces.
- Will not initiate or promote corrosion of reinforcing steel embedded in concrete or galvanized steel floor and roof systems.
- Exceeds industry standards for durability due to freezing and thawing, offering superior workability, pumpability and placement with accelerated concrete setting times.
- WeatherMix® can be placed using chute, bucket, pump or conveyor.
- The placement of WeatherMix® should follow the regulations of ACI 306: *Guide to Cold Weather Concreting* or ACI 305: *Specification for Hot Weather Concreting*.

Cold Weather

WeatherMix C1	50° - 46° F
WeatherMix C2	45° - 41° F
WeatherMix C3	40° - 35° F
WeatherMix C4	34° - 30° F
WeatherMix C5	29° - 24° F
WeatherMix C6	23° - 19° F

Hot Weather

WeatherMix H1	81° - 85° F
WeatherMix H2	86° - 90° F
WeatherMix H3	91° - 95° F
WeatherMix H4	96° - 100° F
WeatherMix H5	101° - 105° F

LafargeHolcim US
8700 W. Bryn Mawr Avenue
Suite 300
Chicago, IL 60631
(773) 372-1000

SS_WEATHERMIX 1/19
© 2019 Holcim (US) dba. LafargeHolcim US, Chicago, IL